

KDS Separator

Multi-disc Roller Separator



MABAREX 

2021, rue Halpern, Montréal (Québec) H4S 1S3

T 1 800 636-6721

MABAREX.COM

Multi-disc Roller Separator

KDS Separator

Clog-free

Self-cleaning structure of KDS Separator can handle oily and fibrous material at ease.

Trouble-free

Trouble free operation of KDS Separator allows automatic, continuous operation.

Small-footprint

Smallest model of KDS Separator takes up less than 2.2ft.

Low Operating Costs

KDS Separator consumes as low as 0.06kW and "ZERO" rinsing water is required.



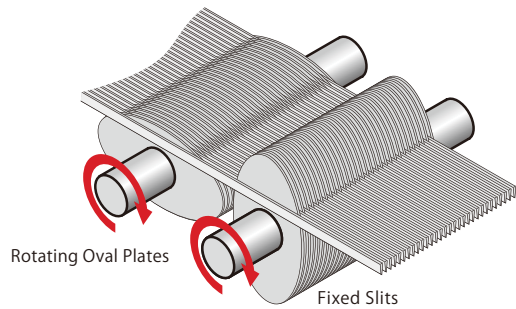
Highly Efficient Self-cleaning Separator

It is a simple, compact, efficient, and unprecedented solid liquid separator with so many advantages.

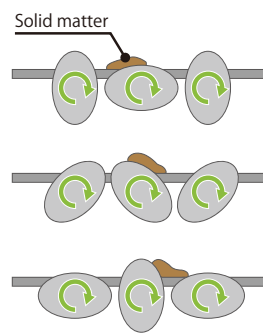
Various Applications

KDS Separator can be used for wastewater, sludge, livestock manure, food waste, algae, grease trap waste and more!

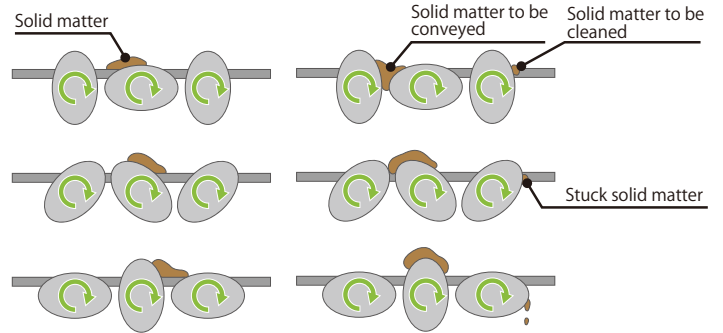
Structure



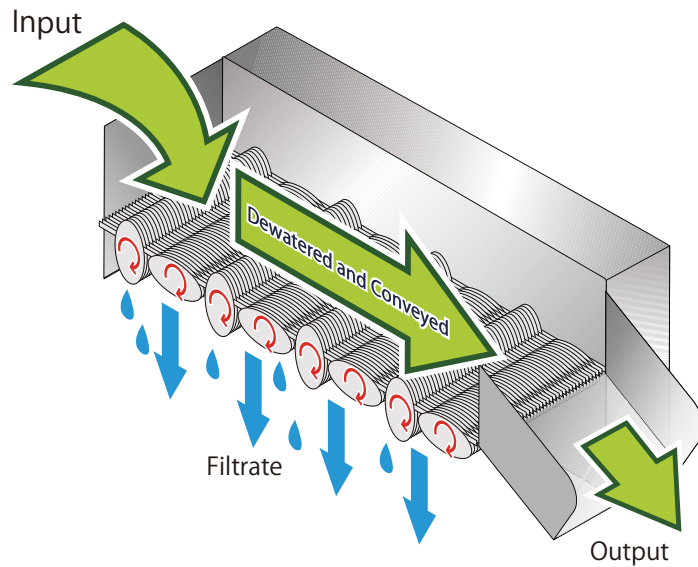
Dewatering and Conveying



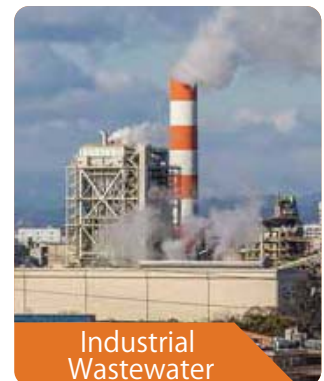
Secret of Self-cleaning Mechanism



Oval plates push down the stuck solid matter to keep the filtering zone clean.



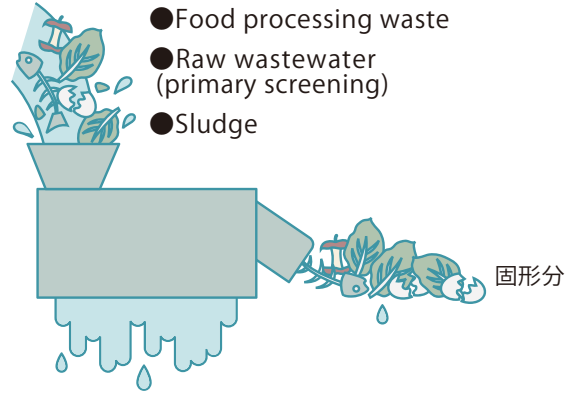
Applications



KDS Separator Applications

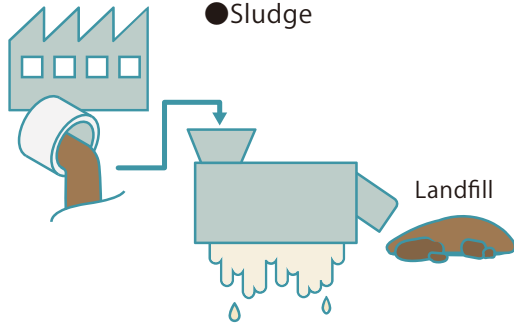
Food industry

- Kitchen and restaurant waste
- Food processing waste
- Raw wastewater (primary screening)
- Sludge



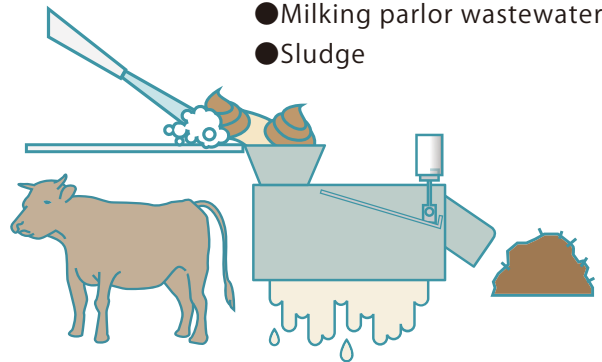
Sewage Treatment

- Raw wastewater (primary screening)
- Sludge



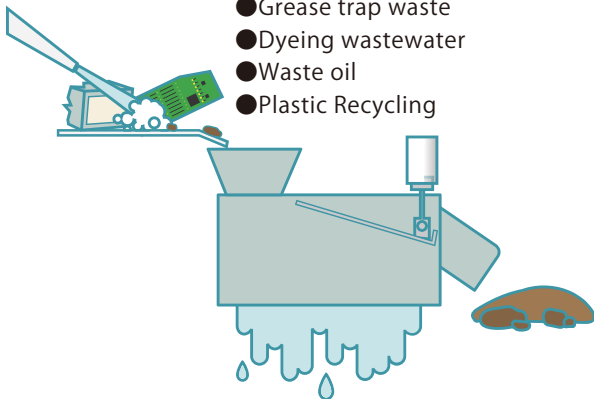
Cattle Farm

- Raw manure
- Milking parlor wastewater
- Sludge



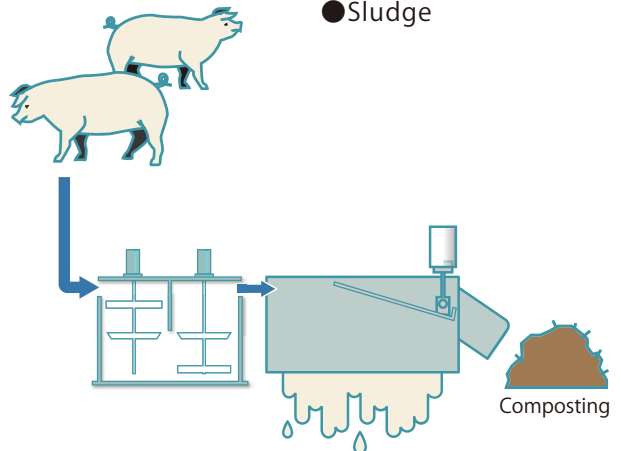
Others

- Barrel polishing water
- Water-based paint wastewater
- Grease trap waste
- Dyeing wastewater
- Waste oil
- Plastic Recycling



Pig Farm

- Raw manure
- Sludge



KDS Separator References



Digested Sludge

Dewatering of digested sludge from a biogas plant.

Solids capture rate: 99.3%

Cake dryness: 21.7%



Seafood Processing Waste

Oily fish waste captured by grease trap in wastewater treatment.

Flow rate: 10,560gal

Dry solids throughput: 330lb-DS/day



Livestock Manure

Dewatering of livestock manure without polymer usage

Solids capture rate 64% (no polymer used)

Cake dryness 24.2%



Dissolved-air Flotation Sludge

Thickening of DAF sludge

Solids capture rate: 97%

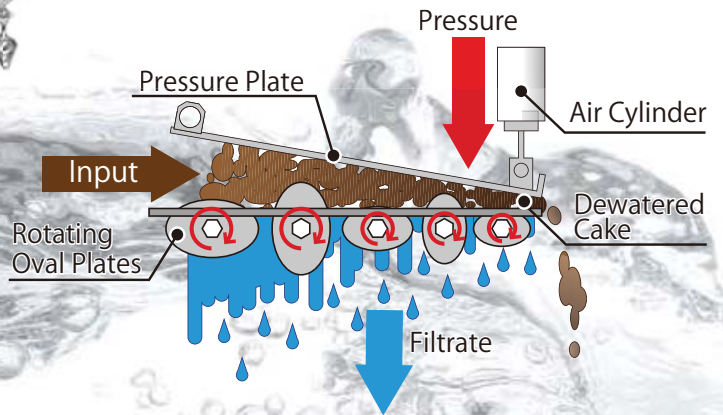
Thickened sludge dryness: 17%

Specification



Standard Performance

Input	Cake Dryness
Cattle Manure	25-35%
Pig Manure	20-30%
Waste Activated Sludge	15-25%



Dewatering Model

Filtering Gap 0.039[in]

Model	Roller Width [in]	Number of Rollers	DS Throughput [lb-DS/h]	Power Consumption [kw]	Hydraulic Capacity (input solids content: 2%) [gal/h]	Dimensions [in]
SS-311D	11	11	44.1~66.2	0.2	264~396	W24.1-L46.1-H15.8
SS-411D	15	11	66.2~88.2	0.4	396~528	W28-L46.1-H15.7
SS-511D	18.9	11	88.2~110.3	0.4	528~660	W32-L46.1-H15.7
SS-611D	22.8	11	110.3~132.3	0.4	660~792	W35.9-L46.1-H15.7
SS-811D	30.7	11	132.3~165.4	0.4	792~990	W45.7-L53.3-H18.3
SS-1011D	38.6	11	154.4~187.4	0.75	924~1122	W53.5-L67.5-H18.3
SS-1211D	46.5	11	176.4~209.5	0.75	1056~1254	W61.4-L67.5-H18.3

Note: Capacity above is solely estimate and it may vary depending on the element and concentration of the input. Above capacity is for the standard model with 0.039[in] filtering gap.

Thickening Model

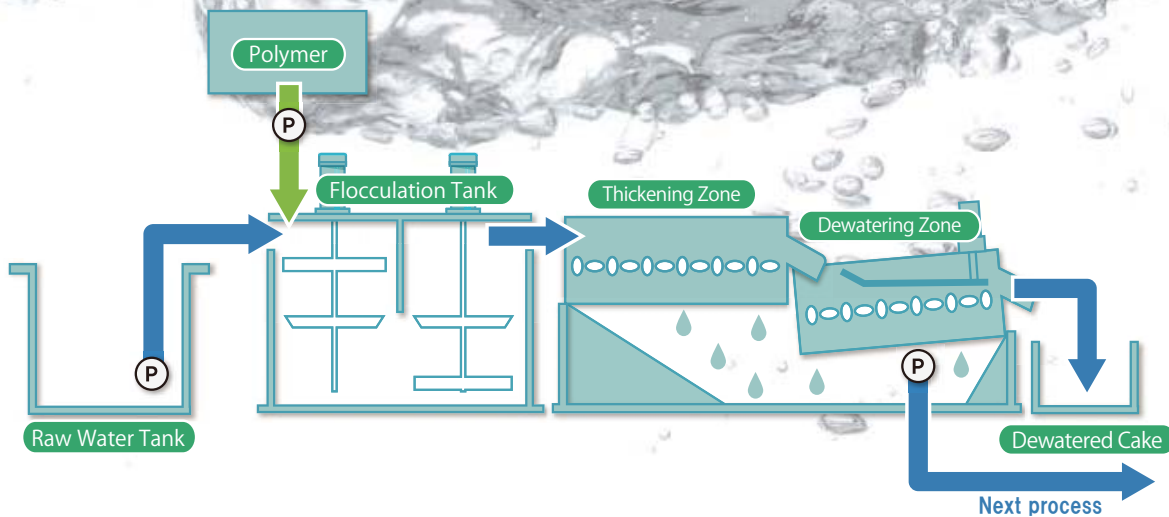
Filtering Gap 0.039[in]

Model	Roller Width [in]	Number of Rollers	DS Throughput [lb-DS/h]	Power Consumption [kw]	Hydraulic Capacity (input solids content: 2%) [gal/h]	Dimensions [in]
SS-2.56	9.3	6	44.1	0.06	264	W14.1-L21.1-H6.9
SS-312	11	12	108	0.2	647	W24.1-L45.3-H15.7
SS-412	15	12	130.1	0.2	779	W28-L45.3-H15.7
SS-512	18.9	12	183	0.2	1096	W32-L45.3-H15.7
SS-612	22.8	12	220.5	0.4	1320	W35.9-L45.3-H15.7
SS-616	22.8	16	286.6	0.4	1716	W35.9-L58.3-H15.7
SS-812	30.7	12	463	0.75	2772	W45.7-L57.1-H18.3
SS-912	34.6	12	507.2	0.75	3036	W49.6-L57.1-H18.3
SS-1212	46.5	12	683.6	0.75	4092	W61.5-L57.1-H18.3

Note: Capacity above is solely estimate and it may vary depending on the element and concentration of the input. Above capacity is for the standard model with 0.039[in] filtering gap.

Process Diagram

KDS Separator Flocculation Model



● Specification can be changed upon request.

MABAREX 

2021, rue Halpern, Montréal (Québec) H4S 1S3

T 1 800 636-6721

MABAREX.COM

Manufacturer **Kendensha Co., Ltd.**

Headquarters 1372-15 Nagahamacho, Izumo-shi, Shimane, 693-0043, JAPAN

TEL: 0853-28-1818 FAX:0835-28-2858

e-mail info@kendensha.co.jp

URL <http://kendensha.com>

Tokyo Office BIC Asahi Office 208, 7-1 Hanedaasahicho, Ota-ku, Tokyo, 144-0042, JAPAN

For Your Safety

● Be sure to read the instruction manual thoroughly before using the equipment.

● Please note that specification, dimensions or design of the equipment may change without advance notice.
● Please note that the actual color of the equipment may differ from the one in brochure due to printing quality.